

It is strongly recommended that you allow Windows Update to install the drivers automatically if you have an internet connection. Only use these instructions if you do not have an internet connection.

The WINUSB driver is compatible with Windows XP, Vista, Window 7, and Windows 10 operating systems, both 32 and 64-bit. Please read the “Windows 64-bit Compatibility” document for information on upgrading legacy devices (FW4). A link to our driver downloads on the Amptek website is below.

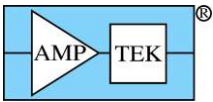
<https://www.amptek.com/software/dp5-digital-pulse-processor-software/dpp-installation-instructions>

Download the WINUSB driver package in Step 1 shown on the web page.

NOTE: There are two options in the “WinUSB_drivers” directory. It is CRITICAL to select the correct package. If the wrong package is installed, it can be difficult to uninstall and re-install the correct package.

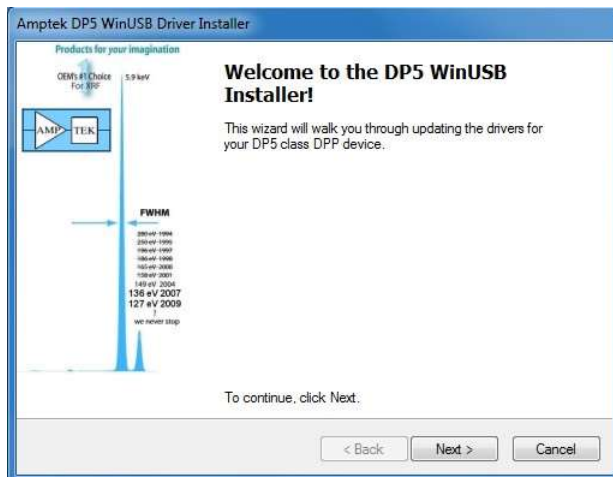
- **For modern FW6 devices, select “FW6_WinUSB_current”**
 - **DP5 with FW6 (FW6 factory default after Nov 2011)**
 - **X-123 with DP5 inside with FW6 (FW6 factory default after Nov 2011)**
 - **DP5G (FW6 factory default)**
 - **GAMMA-RAD5 (FW6 factory default)**
 - **PX5 (FW6 factory default)**
 - **MCA8000D (FW6 factory default)**
- **For older devices using FW5 and Legacy FW4, Select FW5_WinUSB_legacy:**
 - DP5 (FW5 default from the factory pre Nov 2011)
 - X-123 with DP5 inside (FW5 default from the factory pre Nov. 2011)
 - DP4 (legacy FW4 with WINUSB upgrade)
 - X-123 with DP4 inside (legacy FW4 with WINUSB upgrade)
 - PX4 (legacy FW4 with WINUSB upgrade)
 - Gamma-Rad (legacy FW4 with WINUSB upgrade)

FW5_WinUSB_legacy	7/12/2021 4:53 PM
FW6_WinUSB_current	7/12/2021 4:52 PM
Manual WINUSB Driver Installation Instru...	7/12/2021 4:47 PM
Windows 64 bit Compatibility.pdf	7/6/2021 3:45 PM

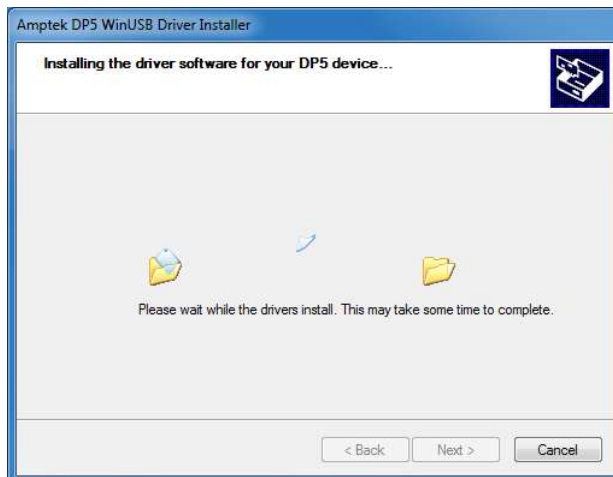


Windows 7/8/10 Installation

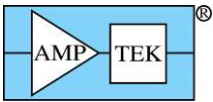
1. Do NOT plug in the USB device.
2. You must be logged in as an Administrator to install the driver (right-click and “Run as administrator” is okay).
3. Copy the WinUSB directory to your local hard drive.
4. Select either the “FW6_WinUSB_current” or the “FW5_WinUSB_legacy” directory as specified above. **This is critical.** Using the incorrect directory will install the wrong driver and will be very difficult to uninstall. In the WinUSB directory right click on the “dpinst.exe” file and select “Run as administrator.”
5. Click OK/YES on any security warnings that appear.
6. The Amptek WinUSB Installer will start. Click Next.



7. The driver will install.



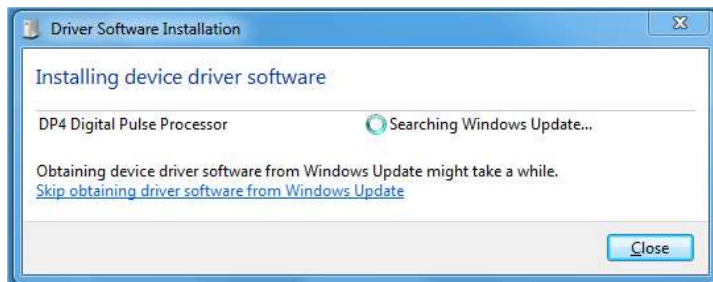
8. Click Finish.



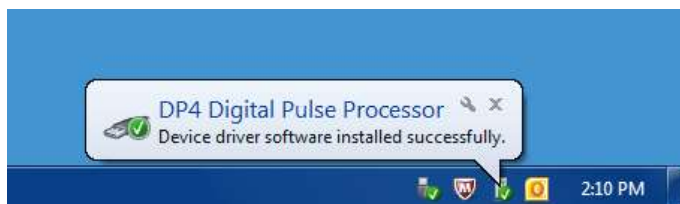
9. Plug in the USB device.



10. HINT: Click on the balloon and click “Skip obtaining software from Windows Update.” This will save a few minutes of installation time.



11. The WINUSB driver is now installed.



12. To install the DPPMCA or ADMCA (FW5 only) software simply copy the directory to your local machine and run the executable. You can create a shortcut for your desktop by right-clicking on the executable, selecting Create shortcut, and then dragging the shortcut to your desktop. The software can be downloaded from our website at anytime <https://www.amptek.com/software/dp5-digital-pulse-processor-software>.